

## BETA CAE Systems S.A. announces the release of **μETA v6.8.3** with enhancements and known problems resolved

The official software release is comprised of the latest meta\_post\_v6.8.2 files dated October 11<sup>th</sup>, 2012. These replace any pre-releases and files downloaded prior to this date.

### Supported platforms

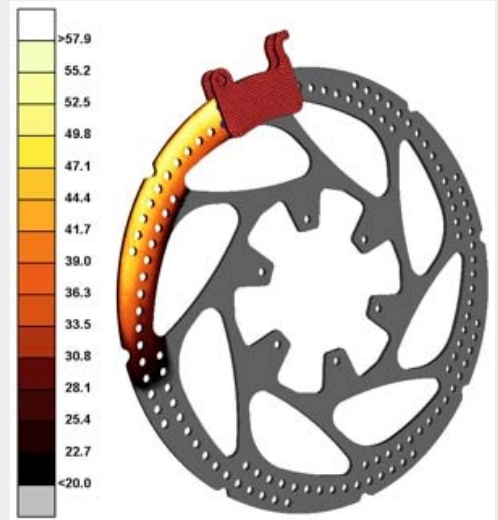
### New features introduced

### Known issues resolved

### Compatibility

### Documentation

### Download




## Supported platforms

μETA v6.8.x is available on MS-Windows, Linux and Mac OS only.

The support of the UNIX platforms: HP-UX, IBM-AIX and SUN-Solaris is discontinued.

The support of Windows 2000 SP3 is also discontinued and Windows XP SP1 is the earliest MS-Windows supported version.

For details, please review the latest document on the supported platforms and minimum system requirements 

[Go to Top](#)

## New features introduced

- The Modal Response and FRF Assembly tools can now calculate the pressure on fluid grids from the complex eigenvalues (Nastran SOL107) of a coupled acoustic model.
- META now supports reading, in the 2D Plot tool, modal contribution fractions from Nastran \*.pch files.
- It is now possible to draw the interior surfaces of Fluent models.

[Go to Top](#)

## Known issues resolved

- The result option "Max of In Out/All Layers" would not calculate correct results from Abaqus \*.odb files.
- The 32-bit MS-Windows version of META would crash when reading FEMZIP-L files compressed with the 64-bit executable.
- The graphics performance of META would deteriorate when working with multiple Pamcrash \*.DSY files and numerous plotted curves.
- Pamcrash TETRA10 elements would not be read.
- META would not read certain Permas \*.uci files.
- META would not read certain Ensignht files.

[Go to Top](#)

## Compatibility

μETA v6.8.3 can only run with beta\_lm\_tools v6.0 or later. The latest beta\_lm\_tools version is v6.3.

The .metadb files saved by the later versions of μETA are compatible and can be opened by earlier versions of μETA.

[Go to Top](#)

## Documentation

Documentation is packed into the "common" file. While the "common" file is unpacked, you will find an html file that will guide you through the available PDF documents, including the Release Notes and the Users Guides.

### Release Notes

Please refer to the Release Notes document for more details about the software corrections and the new features.

A detailed Release Notes document is available in PDF in the download directory and also in the /docs sub-directory within the installation directory.

### Users Guide

An Users Guide, updated for version 6.8.3, is also available in PDF.

### Tutorial files' availability

The demofiles necessary to cover the tutorials' documentation are available as separate downloads within the META\_POST\_TUTORIALS folder of the [ Public ] area. Some tutorial files have been updated for μETA v6.8.2.

[Go to Top](#)

## Download

### Where to download from

Customers who are served directly by BETA CAE Systems S.A. may download the new software, examples and documentation from their

account in our server. They can access their account through the user login link at our web site <http://www.beta-cae.gr>  
Contact us if you miss your account details. The [ Public ] link will give you access to the public downloads area.  
Customers who are served by a local business agent should contact the local support channel for software distribution details.

### What to download

For the installation of the software on each platform type, the following are needed:

the tar file with the respective platform name (e.g. Linux etc.), or the respective zip file for Windows and the "common" .tar or .zip file

Previous software releases can be found in the sub-directory called "old".

### Particularly for the support of Abaqus .odb files

- Only for the support of Abaqus .odb files and depending on the Abaqus version you use, you will need to download the corresponding file(s), containing Abaqus libraries, from the META\_POST\_EXT\_LIBS directory within the [ Public ] link.  
If the support of Abaqus .odb files is not an issue then there is no need to download these files.  
To support, at the same time, Abaqus 6.3-4 (or earlier), Abaqus 6.4-x, Abaqus 6.5-x, Abaqus 6.6-x, Abaqus 6.7-x, Abaqus 6.8-x, Abaqus 6.9-x, Abaqus 6.10-x, Abaqus 6.11-x and Abaqus 6.12-x .odb files, it is recommended to download all respective Abaqus files. Note that for the support of .odb files of Abaqus version 6.8-x or later on Windows platforms, extra actions may be required.
- The Abaqus libraries have to be downloaded once. If these files are downloaded now (or have been already downloaded with a previous µETA version), there is no need to download them again with a future version of µETA.
- It is also possible to use the Abaqus libraries directly from the installation directory of the Abaqus software, if this directory is accessible. In this case you can avoid downloading the respective Abaqus libraries from the [ Public ] link.

For more details, please, refer to the SetUp Guide.

### Sample files for tutorials & examples on automation

Sample files that can be used with the tutorials as well as examples on automation can be downloaded from the META\_POST\_TUTORIALS directory within the [ Public ] link.

[Go to Top](#)

---

*This newsletter was sent to you because you have requested to be subscribed to our email announcements, because you are a registered contact person for your company or because you have recently contacted our Customers Service department.*

*If you wish to be **substituted** or **removed** from our email list, please, **Reply** to this email and let us know about your request.*

*To ensure delivery of our announcements to your Inbox, please add this sender address to your email address book or safe sender list.*



### BETA CAE Systems S.A.

Kato Scholari, Thessaloniki  
GR-57500, Epanomi  
Greece

Tel: +30-2392-021420  
Fax: +30-2392-021828  
Email: [ansa@beta-cae.gr](mailto:ansa@beta-cae.gr)  
URL: <http://www.beta-cae.gr>

---