

# BETA CAE Systems S.A.

announces the release of the

## SPDRM v1.0.1

### About this release

BETA CAE System S.A. announces the release of v1.0.1 of Simulation, Process, Data & Resources Manager (SPDRM) software. In this version, enhancements have been made to further facilitate the organization and planning of your simulation processes. Additionally, fixes have been made to reported issues.

### In detail:

#### About SPDRM

#### Enhancements

#### Issues resolved

#### Documentation Updates

#### Supported platforms and System Requirements

#### Download

### About SPDRM

Addressing the problem of contemporary CAE community to integrate data, processes and resources, BETA CAE Systems S.A. brings forth a new solution for driving high quality and effective virtual product development procedures.

This new software tool, the Simulation, Process, Data & Resources Manager (SPDRM), provides a simple and intuitive way to capture, deploy, and manage CAE process workflows by integrating the resources, the tools, and the data associated with these.

Reflecting a deep understanding of the demands of simulation and its role in the enterprise, it couples with the enterprise PDM system and integrates CAE into higher level business processes by delivering CAE tasks and associated data to analysts, engineers, designers, suppliers, and managers.

The architecture and implementation of SPDRM is scalable, so that it can be deployed in different levels, such as in team, department or enterprise level. The system requirements are modest and the learning curve is smooth.

This new software for the orchestration and mastering of simulation procedures gives breakthrough solutions to the bottlenecks faced while using legacy tools.

SPDRM brings significant benefits to today's virtual product development, such as:

- overall process consistency, at all levels
- standardization of the procedures
- harmonization of operations throughout the organization but also with its suppliers
- referability and traceability of data and meta-data, of their modifications and variations
- reduction of data redundancy
- process progress monitoring and the effective processes quality management
- reliable and referable documentation
- productivity increase thanks to the effective resources management through job delegation to available and competent resources
- repeatability of processes, even when using updated or different datasets and software tools
- quality improvement of the deliverables
- increase of confidence to CAE, plus the time and cost reduction of the overall simulation process



### Enhancements

#### Data Management:

- Newer "Version" can be now detected through the "Check DM Updates" function.
- ANSA automatically connects to the SPDRM server when used by a mime-type as file viewer.

#### Resources Management

- Newly created groups can now get the default ACL (i.e. according to the server's configuration) on data that already existed.

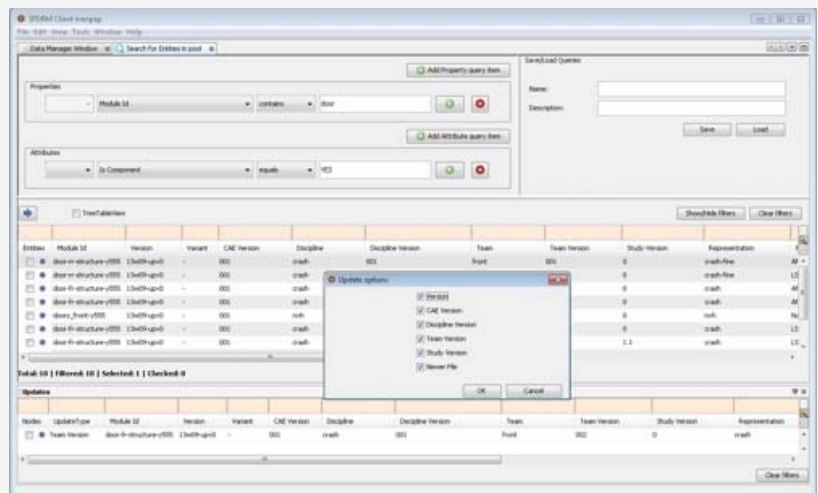
#### Scripting

- New script functions have been added to create and save queries.

- Information about the SPDRM session (i.e. Help > About SPDRM) has been made available through script.

#### GUI

- It is now possible to switch user (i.e. File > Switch



User) even when the auto-login setting is enabled.

- Multi-conditional filters have been added in all lists.

## Miscellaneous

- The file browser keeps the last path used.



## Issues resolved

### Process Management

- When the same node was executed several times with different variable values, its parametric output slot of type FILE would not get the current value.
- The values of the "File Name" column were missing in the MxN Instances window.
- Nodes marked as "Auto Start" did not start automatically if the input slot was triggered by a loop connection.
- When the replacement of the parametrically defined vault failed, registered application nodes would not be executed properly, and output slots of types FILE and LIST\_OF\_FILES would release their values.
- Merge of process templates with the same name could fail in the process library.

### Data Management

- Library items could not be versioned properly when users without "delete" privileges on the existing files tried to create new file versions.
- An error occurred when trying to modify the status of a component under certain circumstances.
- Team Version was not initialised properly when the Discipline Version of a Component was spinned-up.

### Resources Management

- Registered Application's options that were marked as "Required" did not appear in the Application Settings window.

### Scripting

- When trying to spin-up the study version of a component using the dm.createdMIItem script function, the new component would lose its "Team" value.

### GUI

- Certain characters would not be displayed properly within text fields, due to very narrow margins.

## Miscellaneous

- Some temporary directories (e.g. spdrm export dirs, node execution dirs) were not deleted from the NodeExec dir.
- "ANSA-connect" security issue when LDAP authentication was used: ANSA was able to connect to SPDRM server by providing a valid username and empty password.



## Documentation Updates

- Updated installation guide.
- Updated users guide.
- Updated tutorial files.



## Supported platforms and System Requirements

The server software of SPDRM is currently available on Linux 64bits. The MS Windows flavour of the server software will be also made available soon.

The client software of SPDRM are running under 64bit flavours of Linux and MS Windows.

The software requires a different license key to the rest of the products of BETA CAE Systems. This license key should be incorporated into the same license file, if such is already installed, and requires beta\_lm, the proprietary license manager of BETA CAE Systems.

For details, refer to the [System requirements](#) document.



## Download

### Where to download from

Customers who are served directly by BETA CAE Systems S.A. may download the new software, examples and documentation from their account on our server. They can access their account through the "user login" link at our web site <http://www.beta-cae.gr> Contact us if you miss your account details. The [ Public ] link will give you access to the public downloads area.

Customers who are served by a local business agent should contact the local support channel for software distribution details.

### What to download

All files required for the installation of this version reside in the folder named "**SPDRM\_V1.0.1**" and are dated as of **March 4<sup>th</sup>, 2014**. This package contains the server software on Linux 64bit and the client software on Linux and MS Windows 64bit systems.



*This newsletter was sent to you because you have requested to be subscribed to our email announcements, because you are a registered contact person for your company or because you have recently contacted our Customers Service department.*

*If you wish to be **substituted** or **removed** from our email list, please, **Reply** to this email and let us know about your request.*

*To ensure delivery of our announcements to your Inbox, please add this sender address to your email address book or safe sender list.*



**BETA CAE Systems S.A.**  
Kato Scholari, Thessaloniki  
GR-57500, Epanomi  
Greece

Tel: +30-2392-021420  
Email: [ansa@beta-cae.gr](mailto:ansa@beta-cae.gr)  
URL: <http://www.beta-cae.gr>

---

---

---

---