

Up to 80% reduction in parametric morphing setup time

Morphing Strategies Library tool allows storing existing and newly created morphing strategies in ANSA. These morphing setups can be retrieved from the database using filters to quickly find the best morph strategy to be used for a new vehicle program. Morphing Strategies Library not only allows the re-use of previously created morphing setups, it also retains the knowledge about the best practices developed by expert users, so the new users can readily apply them saving a lot of effort.

Functions & Features:

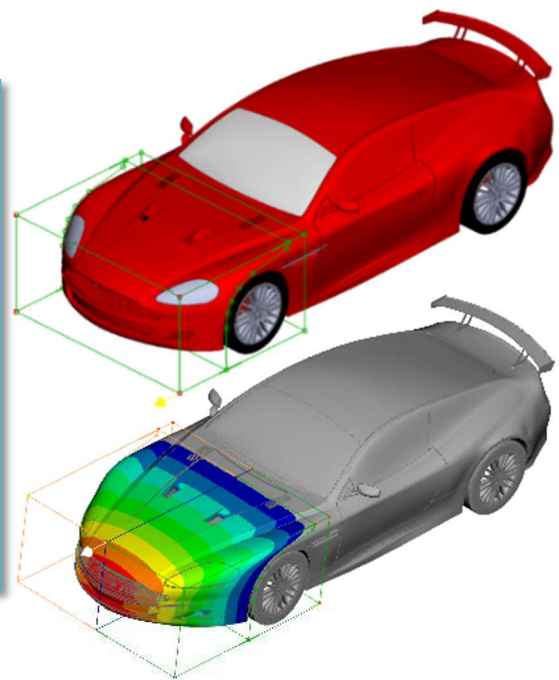
- Searching and retrieving of morphing strategies
- Preview of morph pictures, videos & model in ANSA GUI
- Morphing strategies selection
- Merging of selected morphing strategies with new model
- Automatic Design Variables creation for optimization from predefined parameters
- Categorization of morphing strategies based on custom program codes
- Synchronization of new morphing strategies to the library

Vehicle Type: Sports Platform Code: Aston Martin Region: Front_body

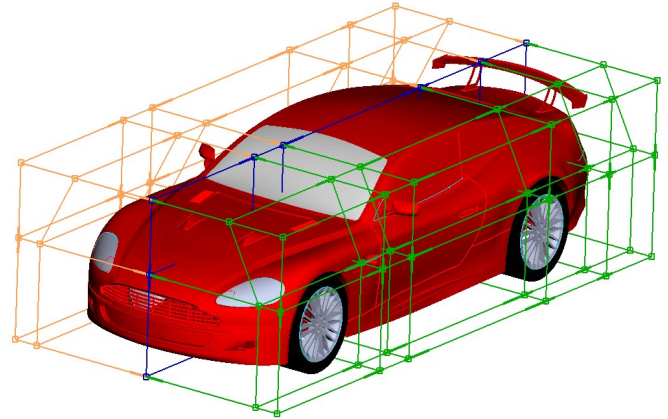
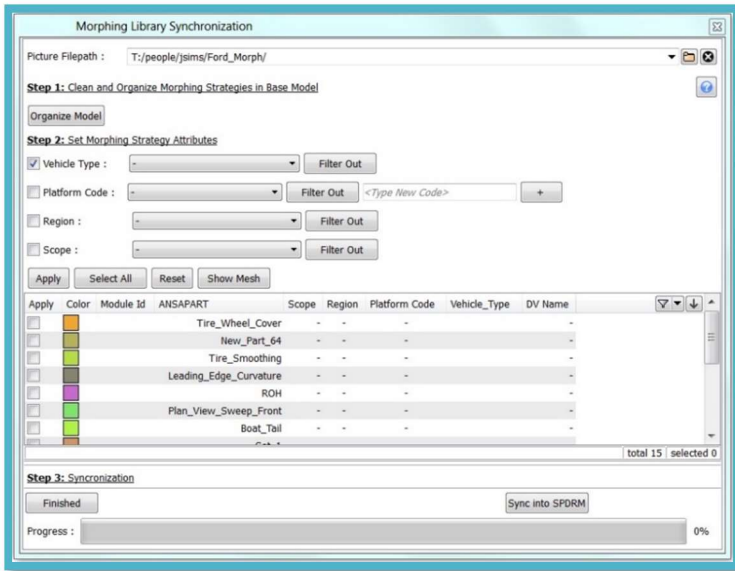
DV Name	ID	Scope	Picture	Video	View in ...	Select
Rear_tire_coverage	1018	Global				<input type="checkbox"/>
Front_plan_view_sweep	1030	Global				<input checked="" type="checkbox"/>
Front_overhang	1015	Global				<input checked="" type="checkbox"/>
Hood_angle_Z_transform	1027	Local				<input type="checkbox"/>
Hood_angle_forward	1027	Local				<input type="checkbox"/>
Hood_Front_edge_X	1027	Local				<input checked="" type="checkbox"/>
Front_tire_coverage	1024	Global				<input type="checkbox"/>
Deck_lid_edge_X_location	1021	Local				<input type="checkbox"/>
Deck_lid_edge_height	1021	Local				<input type="checkbox"/>

Select Base Model:

ANSA File	ID	Picture	View in ...	Select
_Sports_base_model	1045			<input checked="" type="checkbox"/>



Merging of selected morphing strategies with new model



Synchronization of new morphing strategies to the library

Benefits

- Huge time savings
- Knowledge retention
- Easy filtering
- Data mining
- Portability of morphs
- Syncing new strategies
- Videos of morphs
- Auto sequencing and optimization task

Industry Scenario:

Morphing Setup	Conventional	Morphing Library
Initial Model Build	8 days	1 day
Model Validation	1 day	1 day

For More Information please contact:

BETA CAE SYSTEMS USA, INC.
 29800 MIDDLEBELT ROAD, SUITE 100
 FARMINGTON HILLS, MICHIGAN 48334
 UNITED STATES

Email: sales@ansa-usa.com

Locations:

Detroit, Michigan.
Chennai, India.