

BETA CAE Systems S.A. announces the release of ANSA v13.1.5 with new features and important code corrections

The official software release is comprised by the latest ansa_v13.1.5 files that reside in the server at the time of this announcement. These replace any pre-releases and files downloaded prior to September 9th, 2011.

THE DISTRIBUTION PACKAGES OF ANSA V13.1.5 WERE LAST UPDATED ON SEPTEMBER 15th

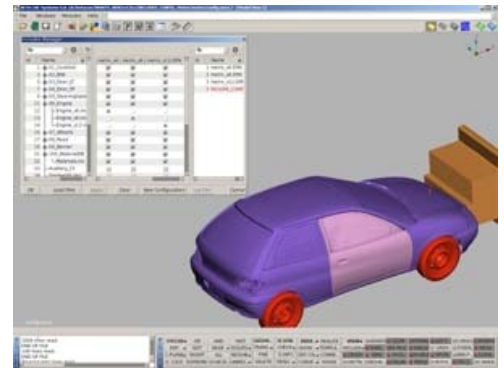
New features

Known issues resolved

Compatibility

Documentation

Download



New features

- Minimum Height shell elements quality criterion: a separate calculation for triangular elements has been added.
- The CompSkin [Compare Skin] built-in script function has been added. This checks any modifications made on the Skin of a volume and propagates them to the volume by enforcing its remeshing.

For more details about the new software features, enhancements and corrections please, refer to the [Release Notes](#) document.

[Go to Top](#)

Known issues resolved

- A new Service Pack [CT_2011_SP2] was applied on CT based CAD data Translators that are available with the v13.1.5 package. This service pack corrects, among others, several issues emerging during the NX files translation.
- The transformation function (GEOM>TRANSF>MOVE) was deleting the applied FE-representations of connections.
- Connections Manager: the realization of SPIDER FE-representation was not always respecting the "distance from perimeter" criterion.
- Pasting nodes was sometimes causing the unexpected termination of the program, on Windows 32-bit machines.
- VOLUMES LIST: remeshing a volume was not respecting the Biasing settings, after changing the factor for "linear biasing" during the editing of the volume card.
- EXTRUDE>OFFSET: when the creation of a single layer was requested, based on shells of different properties, collapsed solid elements were generated.
- EXTRUDE>OFFSET: the box selection of multiple closed rings of faces was leading to solid elements layer of incorrect height.
- Output: node ranges defined in Set were lost during exporting using the Model option.
- Pam-Crash: improper value for LCSTRA of the Solid Material type 42 was outputted.
- Pam-Crash BAGIN: editing of the "Inflator" was sometimes causing an unexpected program exit.
- Pam-Crash: wrong crash time step calculation for solid elements.
- FLUENT Input: importing .cas files with hanging nodes was leading to an unexpected program exit.
- FLUENT Input: high memory consumption when importing with the option Skip Volume Mesh enabled.

and more...

For more details about the new software features, enhancements and corrections please, refer to the [Release Notes](#) document.

[Go to Top](#)

Compatibility

ANSA files saved by version 13.1.5 can be opened by all 13.1.x versions, but not by earlier ones.

[Go to Top](#)

Documentation

Release Notes

For more details about the new software features, enhancements and corrections please, refer to the "ansa_v13.1.5_release_notes" pdf document, that can be downloaded separately. This can be also reached by the "Help>Ansa documentation index" accessed by top menu bar within ANSA.

[Go to Top](#)

Download

Where to download from

Customers who are served directly by BETA CAE Systems SA, may download the new software, examples and documentation from their account in our server. They can access their account through the user login link at our web site <http://www.beta-cae.gr> Contact us if you miss your account details. The [Public] link will give you access to the public downloads area. Customers who are served by a local business agent should contact the local support channel for software distribution details.

What to download

For the installation of the software on each platform type the following are needed:

- the .tar file with the respective platform name (e.g. Linux etc.), or the respective .zip file for Windows and
- the "common" .tar or .zip file
- the "tutorials and examples" .tar or .zip file

Previous software releases can be found in the sub-directory called "old".

