

BETA CAE Systems S.A. announces the release of **μETA v6.8.0** with new important features and code corrections

The official software release is comprised by the latest meta_post_v6.8.0 files dated March 20th, 2012. These replace any pre-releases and files downloaded prior to this date.

Supported platforms

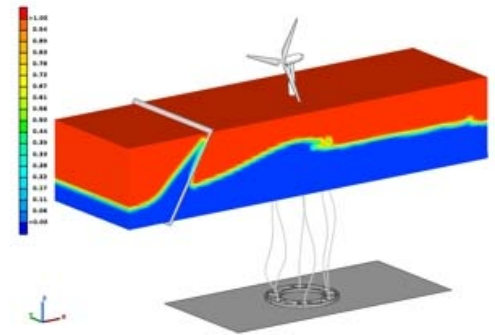
New features introduced

Known issues resolved

Compatibility

Download

Documentation




Supported platforms

μETA v6.8.x is available on MS-Windows, Linux and Mac OS only.

The support of the UNIX platforms: HP-UX, IBM-AIX and SUN-Solaris is discontinued.

The support of Windows 2000 SP3 is also discontinued and Windows XP SP1 is the earliest MS-Windows supported version.

For details, please review the latest document on the supported platforms and minimum system requirements .

[Go to Top](#)

New features introduced

- Improved launching speed
- Search Engine toolbar integrated in the Command Line
- DataTransformation tool for scaling Model geometry, comparison of displacements of models solved in different coordinate systems, etc.
- New managers for handling Includes, Connections, Boundary Conditions, Sets
- Drawing styles manager for applying per Pid styles
- Reading geometry from STL (binary and ASCII), VRML, 3DXML (TESSELLATED) and PLY (Polygon File Format) files
- Support of Abaqus CEL (Coupled Eulerian-Lagrangian) analysis and crack propagation results, visualized through automatically created isofunctions
- Support of LS-Dyna ALE (Arbitrary Lagrangian Eulerian) material results, visualized through automatically created isofunctions
- Plotting, in the 2D Plot tool, curves from DIAdem (*.DAT, *.R32, *.R64) and RPC III test-data files
- Tags and hidden slides supported in the Report Composer
- Conditional Formatting for changing cell attributes in the Spreadsheet Editor

... and more

[Go to Top](#)

Known issues resolved

- Reading Abaqus, Ls-Dyna, Pamcrash, Radioss, Fluent, Star CCM+ and OpenFOAM files by overwriting previously loaded ones, the memory consumption could become abnormally high
- μETA would crash while loading vector results from certain LS-Dyna d3plot files
- Various issues of the Annotations tool
- Various issues of the 2D Plot tool
- Various issues of the Report tool

... and more

For more details about the new software features, enhancements and corrections please, refer to the [Release Notes](#) document.

[Go to Top](#)

Compatibility

μETA v6.8.0 can only run with beta_lm_tools v6.0 or later. The latest beta_lm_tools version is v6.3.

The .metadb files saved by the later versions of μETA are compatible and can be opened by earlier versions of μETA.

[Go to Top](#)

Download

Where to download from

Customers who are served directly by BETA CAE Systems S.A. may download the new software, examples and documentation from their account in our server. They can access their account through the user login link at our web site <http://www.beta-cae.gr>

Contact us if you miss your account details. The [Public] link will give you access to the public downloads area.

Customers who are served by a local business agent should contact the local support channel for software distribution details.

What to download

For the installation of the software on each platform type, the following are needed:

- the tar file with the respective platform name (e.g. Linux etc.), or the respective zip file for Windows and the "common" .tar or .zip file

Previous software releases can be found in the sub-directory called "old".

Particularly for the support of Abaqus .odb files

Only for the support of Abaqus .odb files and depending on the Abaqus version you use, you will need to download the corresponding file(s), containing Abaqus libraries, from the META_POST_EXT_LIBS directory within the [Public] link.

If the support of Abaqus .odb files is not an issue then there is no need to download these files.

To support, at the same time, Abaqus 6.3-4 (or earlier), Abaqus 6.4-x, Abaqus 6.5-x, Abaqus 6.6-x, Abaqus 6.7-x, Abaqus 6.8-x, Abaqus 6.9-x, Abaqus 6.10-x and Abaqus 6.11-x .odb files, it is recommended to download all respective Abaqus files.

Note that for the support of .odb files of Abaqus version 6.8-x or later on Windows platforms, extra actions may be required.

- The Abaqus libraries have to be downloaded once. If these files are downloaded now (or have been already downloaded with a previous µETA version), there is no need to download them again with a future version of µETA.
- It is also possible to use the Abaqus libraries directly from the installation directory of the Abaqus software, if this directory is accessible. In this case you can avoid downloading the respective Abaqus libraries from the [Public] link.

For more details, please, refer to the SetUp Guide.

[Sample files for tutorials & examples on automation](#)

Sample files that can be used with the tutorials as well as examples on automation can be downloaded from the META_POST_TUTORIALS directory within the [Public] link.

[Go to Top](#)

Documentation

Documentation is packed into the "common" file. While the "common" file is unpacked, you will find an html file that will guide you through the available PDF documents, including the Release Notes and the Users Guides.

[Release Notes](#)

Please refer to the Release Notes document for more details about the software corrections and the new features.

A detailed Release Notes document is available in PDF in the download directory and also in the /docs sub-directory within the installation directory.

[Users Guide](#)

The µETA Users Guide 6.5.0 is also available in PDF.

[Tutorial files' availability](#)

The demofiles necessary to cover the tutorials' documentation are available as separate downloads within the META_POST_TUTORIALS folder of the [Public] area. The tutorial files have been updated for µETA v6.8.0.

[Go to Top](#)