

BETA CAE Systems S.A. announces the new v14.0.1 release
of the **ANSA & μETA** pre- & post-processing suite,
with new features and code corrections

Following the release of version v14.0.0 of our ANSA & μETA pre-and post-processing suite, with outstanding new software features and tools, which enhance the user experience and increase the simulation processes performance, we announce the release of version v14.0.1 with enhancements and known issues resolved.

Enhancements and Known Issues Resolved in ANSA Pre-processing

Enhancements and Known Issues Resolved in μETA Post-processing

Compatibility

Download

Documentation

Enhancements and Known Issues Resolved in ANSA Pre-processing

Enhancements

- Improvements in the Selection tool for enhancing the ease of use.
- New option for enabling or disabling the export of hierarchy in IGES files.
- New option for the treatment of the intersections between adhesive lines and spot-welds.
- New script functions.

and more...

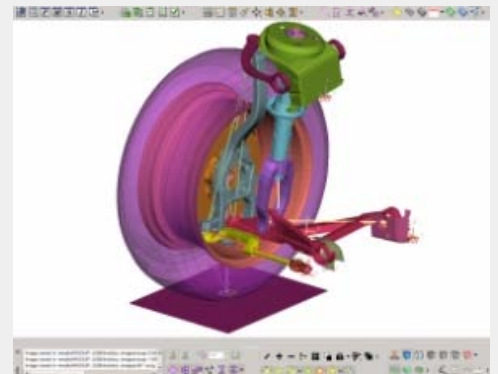
Known Issues Resolved

- Malfunction of keyboard on Linux platforms with RedHat and CENTOS 5.x. ANSA was blocked at any input action.
- It was not possible to create New Filter.
- Changing representation to "Lumped Mass" could lead to unexpected termination.
- It was not possible to translate JT files with the stand alone CAD translator on Windows platforms.
- Connections Manager: the "Separate In/Out" option was not respected in BOLT realization.
- The application of the SIMPLIFY function of the MESH module on "not cleaned" geometry could cause unexpected termination.
- The Reconstruction of Shell Mesh did not affect 2nd order elements when applied on the outer surface of Volume.
- Shell Mesh Reconstruction using CFD params, with zero Max_Length, could cause unexpected termination.
- Applying the REFINE function on triangular mesh could cause unexpected termination.
- Opening a model with a big number of laminates required unaccepted time duration.
- LS-DYNA: having blank value for SSTHK considered 1 instead of 0 (zero).

and more...

For more details about the new software features, enhancements and corrections please, refer to the [Release Notes](#) document.

[Go to Top](#)



Enhancements and Known Issues Resolved in μETA Post-processing

Enhancements

- Support of ANSYS v14.5.
- Support of Abaqus cylindrical solid elements.
- Support of FEMZIP-L & -P v6.05.
- Support of the HASHIN and the Puck Matrix failure criteria for Nastran and Abaqus.
- Enhancements of Curves' handling within the CurveList.
- Various enhancements of the CFDPPost and CompositePost toolbars.

and more...

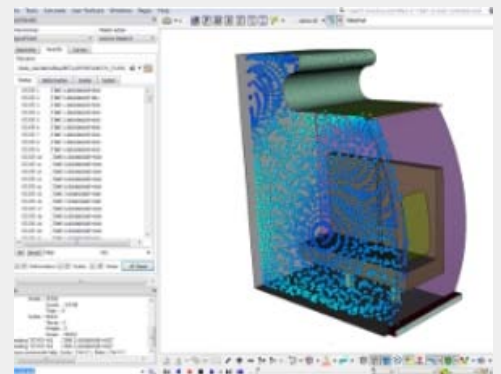
Known Issues Resolved

- META could stuck on CentOS 5.x and RedHat 5.x OS after typing within a textfield.
- Non-linear Von Mises Stresses from Nastran analyses were not calculated correctly.
- Reading certain Radios D00 files would cause unexpected termination.
- Incorrect calculation of certain CFD-specific results for the Fluent and OpenFOAM codes.

and more...

For more details about the new software features, enhancements and corrections please, refer to the [Release Notes](#) document.

[Go to Top](#)



Compatibility

ANSA files saved by version 14.0.1 can be opened by 14.0.0 but not by earlier versions.
The .metadb files saved by μETA version 14.0.1 are compatible and can be opened by earlier versions of μETA.

[Go to Top](#)

Download

Where to download from

Customers who are served directly by BETA CAE Systems S.A. may download the new software, examples and documentation from their account on our server. They can access their account through the "user login" link at our web site <http://www.beta-cae.gr>. Contact us if you miss your account details. The [Public] link will give you access to the public downloads area. Customers who are served by a local business agent should contact the local support channel for software distribution details.

What to download

All files required for the installation of this version reside in the folder named "**BETA_CAE_Systems_v14.0.1**" and are dated as of **February 15th, 2013**. These files should replace any pre-releases or other files downloaded prior to that date. The distribution of this version of our pre- and post-processing suite is packaged in one, single, unified installation file, that invokes the respective installer and guides the procedure for the installation of the required components. For the installation of the software on each platform type, the following files have to be downloaded:

- the .sh installer file residing in the folder with respective platform name, for Linux and MacOS, 32bit or 64bit or the respective .msi installer file for Windows, 32bit or 64bit, and
- the tutorial example files that reside at the top level of the folder of this distribution.
- In addition to the above, optionally, the μ ETA Viewer is available to be downloaded for each supported platform.

The Abaqus libraries required for the post-processing of Abaqus .odb files are included in the installation package and can be optionally unpacked.

Previous software releases can be found in the sub-directory called "old" or in a folder named after the product and version number.

[Go to Top](#)

Documentation

Documentation is packed into the distribution package. After installation procedure, you will find html files that will guide you through the available PDF documents for ANSA & μ ETA, including the Release Notes, the Users Guides, and tutorial instructions.

Updated ANSA documentation

- ANSA v14.0.1 User's Guide.
- CAD data translator.
- ANSA for CFD Quick Start Guide.
- Tutorials (corrections & updates):
 - Basic.
 - Assembly.
 - Optimization with LS-OPT.
 - Abaqus/Standard.
 - Abaqus Substructuring.
 - Co-Simulation with Abaqus.

Updated μ ETA documentation

- Tutorials (corrections & updates):
 - Introduction & getting started.
 - Basic Static.
 - Basic Crash.

Release Notes

Please refer to the Release Notes document for more details about the software corrections and the new features.

A detailed Release Notes documents are available in PDF in the download directory and also in the /docs sub-directory within the installation directory.

Tutorial files' availability

The demo files necessary to cover the tutorials' documentation for both ANSA and μ ETA are available to be downloaded from the top level of this version distribution in the [Public] area.

[Go to Top](#)

This newsletter was sent to you because you have requested to be subscribed to our email announcements, because you are a registered contact person for your company or because you have recently contacted our Customers Service department.

*If you wish to be **substituted** or **removed** from our email list, please, **Reply** to this email and let us know about your request.*

To ensure delivery of our announcements to your Inbox, please add this sender address to your email address book or safe sender list.



BETA CAE Systems S.A.

Kato Scholari, Thessaloniki
GR-57500, Epanomi
Greece

Tel: +30-2392-021420

Fax: +30-2392-021828

Email: ansa@beta-cae.gr

URL: <http://www.beta-cae.gr>
