

BETA CAE Systems S.A. announces the new v14.0.2 release
of the **ANSA & μ ETA** pre- & post-processing suite,
with new features and new code corrections

Following the releases of v14.0.0 and v14.0.1 of our ANSA & μ ETA pre-and post-processing suite, with outstanding new software features and tools, which enhance the user experience and increase the simulation processes performance, we announce the release of version v14.0.2 with enhancements and known issues resolved.

Enhancements and Known Issues Resolved in ANSA Pre-processing

Enhancements and Known Issues Resolved in μ ETA Post-processing

Compatibility

Download

Documentation

Enhancements and Known Issues Resolved in ANSA Pre-processing

Enhancements

Four new script functions have been added in the Scripts Collection Catalogue, namely:

- script CheckFreeMasterNodesOfConstraints.bs (located in scripts/Checks folder)
- script ModifyRBE3s.bs (located in scripts/Constraints folder)
- script VisualizeCONM2sAsHEXAs.bs (located in scripts/Elements folder)
- script SegregatePID.bs for 14.0.2 (located in scripts/Properties folder)

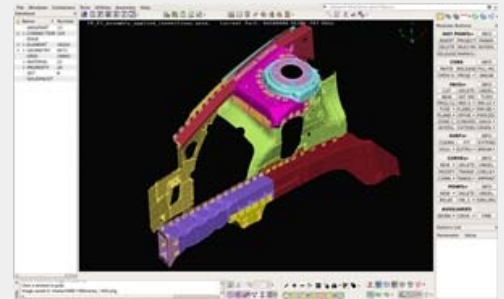
Known Issues Resolved

- Selection of large number of connection entities is now significantly faster
- FIX QUAL would change nodal thickness
- DELETE in PID selection mode would delete non-visible faces of the same PID
- Resulting mesh of 2nd order elements generated through BATCH MESH would sometimes result in intersections.

and more...

For more details about the new software features, enhancements and corrections please, refer to the [Release Notes](#) document.

[Go to Top](#)



Enhancements and Known Issues Resolved in μ ETA Post-processing

Enhancements

In the BusRollOver toolbar:

- A new option is available for cutting all parts when creating cut planes from the 3d > Sections option.
- A new method, named Global direction, is available for the calculation of the intrusion of the vehicle's superstructure to the survival space.

and more...

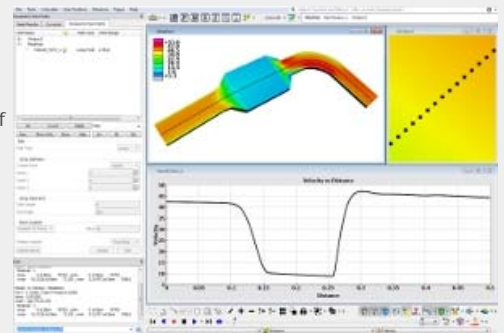
Known Issues Resolved

- The Unix/Linux version of μ ETA might hang after copying a path from another workspace and pasting it to another, in which μ ETA was open
- Adina corner results could not be read correctly
- Results from certain FEMZIP LS-Dyna files would not be read
- Wrong visibility of failed elements for certain LS-Dyna files
- Complex and corner scalar results on solids, shells and beams were not supported correctly in 2D Plot from Nastran *.op2 and *.pch files
- History results from Pamcrash THELE on SPH elements could not be read correctly.

and more...

For more details about the new software features, enhancements and corrections please, refer to the [Release Notes](#) document.

[Go to Top](#)



Compatibility

ANSA files saved by version 14.0.2 can be opened by 14.0.x but not by earlier versions.

The .metadb files saved by μ ETA version 14.0.2 are compatible and can be opened by earlier versions of μ ETA.

[Go to Top](#)

Download

Where to download from

Customers who are served directly by BETA CAE Systems S.A. may download the new software, examples and documentation from their account on our server. They can access their account through the "user login" link at our web site <http://www.beta-cae.gr>

Contact us if you miss your account details. The [Public] link will give you access to the public downloads area.

Customers who are served by a local business agent should contact the local support channel for software distribution details.

What to download

All files required for the installation of this version reside in the folder named "**BETA_CAE_Systems_v14.0.2**" and are dated as of **March 13th, 2013**. These files should replace any pre-releases or other files downloaded prior to that date.

The distribution of this version of our pre- and post-processing suite is packaged in one, single, unified installation file, that invokes the respective installer and guides the procedure for the installation of the required components.

For the installation of the software on each platform type, the following files have to be downloaded:

- the .sh installer file residing in the folder with respective platform name, for Linux and MacOS, 32bit or 64bit or the respective .msi installer file for Windows, 32bit or 64bit, and
- the tutorial example files that reside at the top level of the folder of this distribution.
- In addition to the above, optionally, the μ ETA Viewer is available to be downloaded for each supported platform.

The Abaqus libraries required for the post-processing of Abaqus .odb files are included in the installation package and can be optionally unpacked.

Previous software releases can be found in the sub-directory called "old" or in a folder named after the product and version number.

[Go to Top](#)

Documentation

Documentation is packed into the distribution package. After installation procedure, you will find html files that will guide you through the available PDF documents for ANSA & μ ETA, including the Release Notes, the Users Guides, and tutorial instructions.

Updates on ANSA documentation

- New Tutorial: Watertight model preparation based on STL data.
- Updated Tutorial: External Aerodynamics: Hybrid volume mesh

Release Notes

Please refer to the Release Notes document for more details about the software corrections and the new features.

A detailed Release Notes documents are available in PDF in the download directory and also in the /docs sub-directory within the installation directory.

Tutorial files' availability

The demo files necessary to cover the tutorials' documentation for both ANSA and μ ETA are available to be downloaded from the top level of this version distribution in the [Public] area.

[Go to Top](#)
