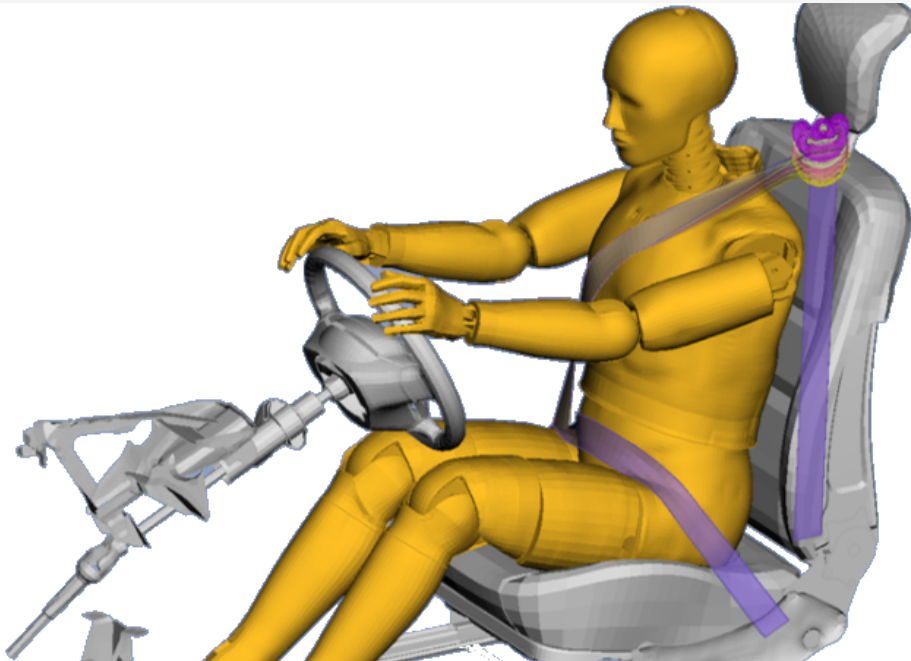


May 4, 2020

BETA CAE Systems announces the release of the v19.1.7 of its software suite



About this release

BETA CAE Systems announces the 7th bug-fix release of ANSA/EPILYSIS/META v19.1.x series.

This version particularly hosts fixes in detected issues, but also a few noteworthy enhancements and implementations.

Follows a selection of the most important items:

Contents

[Enhancements and known issues resolved in Licence Management](#)

[Known issues resolved in ANSA](#)

[Known issues resolved in META](#)

[Compatibility and Supported Platforms](#)

[Download](#)

Enhancements and known issues resolved in Licence Management

A message dialog window pops up when a specific session requires more license credits than those available.

For more details about the new software features, enhancements and corrections please, refer to the Release Notes document.

Known issues resolved in ANSA

Translators

CATIA files designed in R29, would not be imported properly in ANSA, leading to missing Faces.

Connections & Assembly

Import of the VIP2 files in ANSA would lead to bad interpretation of VIP2 Subtype attribute.

Applying Template Scenario to connections performance issue fixed.

Plugins

Test/Impact Device Positioning Plugin would not run for NASTRAN or unsupported solvers.

For more details about the new software features, enhancements and corrections please, refer to the Release Notes document.

Known issues resolved in META

Automation

The command "window arrange convert" would not perform as expected.

For more details about the new software features, enhancements and corrections please, refer to the Release Notes document.

Compatibility and Supported Platforms

ANSA files saved by all the first and second point releases of a major version are compatible to each other. New major versions can read files saved by previous ones but not vice versa.

META Project files saved from version 19.1.7 are compatible and can be opened by META version 16.0.0 or later. To be readable by META versions earlier than v16.0.0, they have to be saved selecting the option "Version 16.0.0" or "Version <16.0.0".

Support for Mac OS has been discontinued.

Support for 32-bit platform has been discontinued for all operating systems.

Download

Where to download from

Customers who are served directly by BETA CAE Systems, or its subsidiaries, may download the new software, examples and documentation from their account on our server. They can access their account through the "sign in" link at our [web site](#).

Contact us if you miss your account details. The Downloads menu items give you access to the public downloads.

Customers who are served by a local business agent should contact the [local support channel](#) for software distribution details.

What to download

All files required for the installation of this version reside in the folders named "**BETA_CAE_Systems_v19.1.7**" and are dated as of **May 4, 2020**. These files should replace any pre-releases or other files downloaded prior to that date.

The distribution of this version of our pre- and post-processing suite is packaged in one, single, unified installation file, that invokes the respective installer and guides the procedure for the installation of the required components.

For the installation of the software on each platform type, download from the respective folders, the .sh file for Linux or the .msi file for Windows.

In addition to the above, optionally, the META Viewer is available to be downloaded for each supported platform.

The tutorials and the example files reside in the folder named "TUTORIALS". This folder includes the complete package of the tutorials and example files, and a package with only the updated ones.

The Abaqus libraries required for the post-processing of Abaqus .odb files are included in the installation package and can be optionally unpacked.

Earlier software releases are also available in the sub-directory called "Previous_Versions" or in a folder named after the product and version number.

